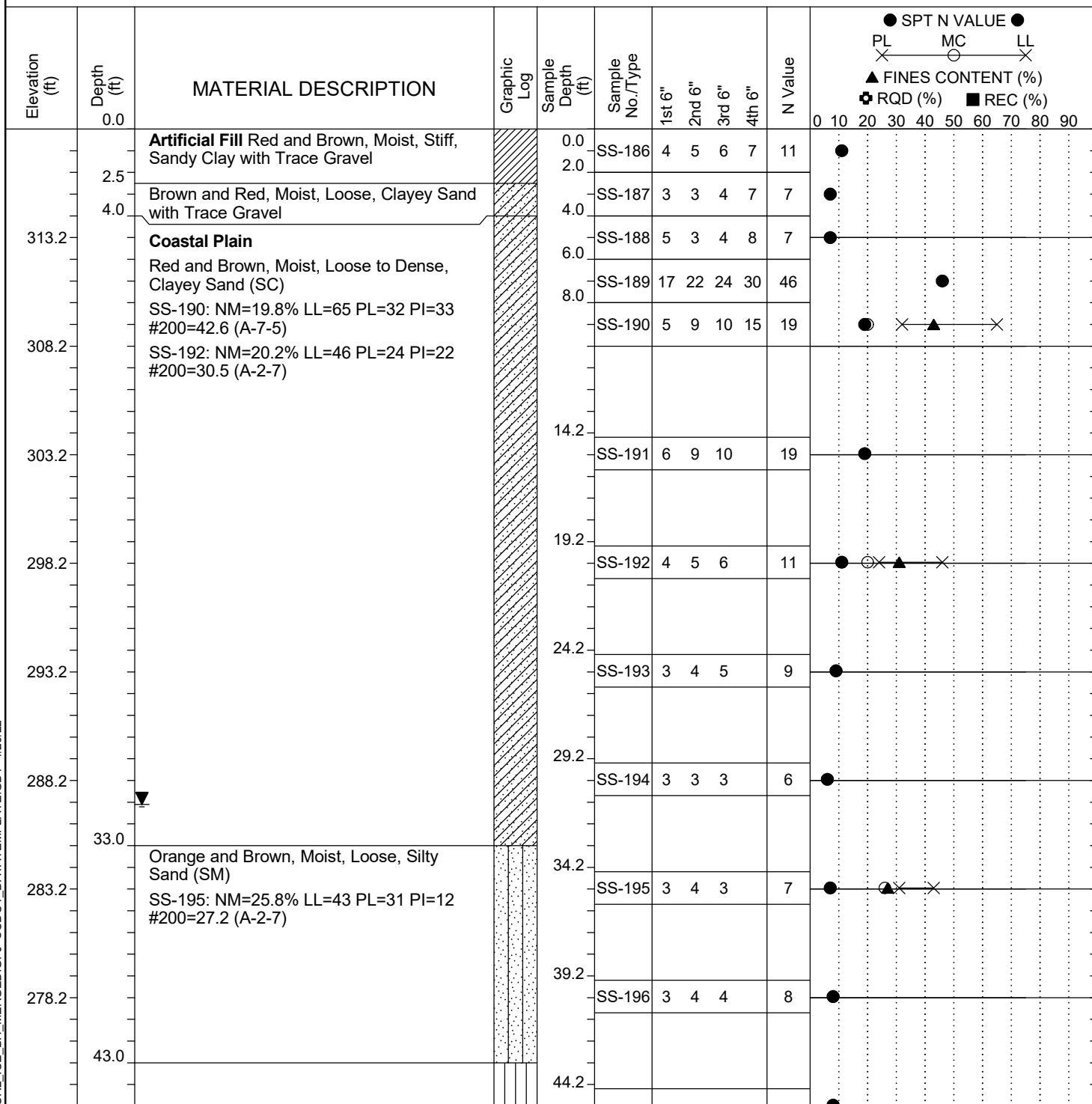


Project ID: P039719				County: Richland		Boring No.: G-131		
Site Description:		Carolina Crossroads Phase 2 - Bridge 42B					Route:	Broad River Rd.
Eng./Geo.: M. Stanbury		Boring Location: 203+85		Offset: 118 LT		Alignment: I20CL		
Elev.: 318.2 ft	Latitude: 34.03979585	Longitude: -81.09362896		Date Started: 2/23/2022				
Total Depth: 109.2 ft	Soil Depth: 109.2 ft	Core Depth: N/A ft		Date Completed: 2/23/2022				
Bore Hole Diameter (in): 2.25		Sampler Configuration		Liner Required: Y (N)		Liner Used: Y (N)		
Drill Machine: D-50 #439	Drill Method: RW		Hammer Type: Automatic		Energy Ratio: 90.8%			
Core Size: N/A	Driller: R. Cassell		Groundwater: TOB N/A		24HR	31.1 ft		



LEGEND

Continued Next Page

SAMPLER TYPE				DRILLING METHOD			
SS	- Split Spoon	NQ	- Rock Core, 1-7/8"	HSA	- Hollow Stem Auger	RW	- Rotary Wash
UD	- Undisturbed Sample	CU	- Cuttings	CFA	- Continuous Flight Augers	RC	- Rock Core
AWG	- Rock Core, 1-1/8"	CT	- Continuous Tube	DC	- Driving Casing		